

LOROMAH ESTATES EMBASSY LODGE

CONTRACT SUM: £1.2million

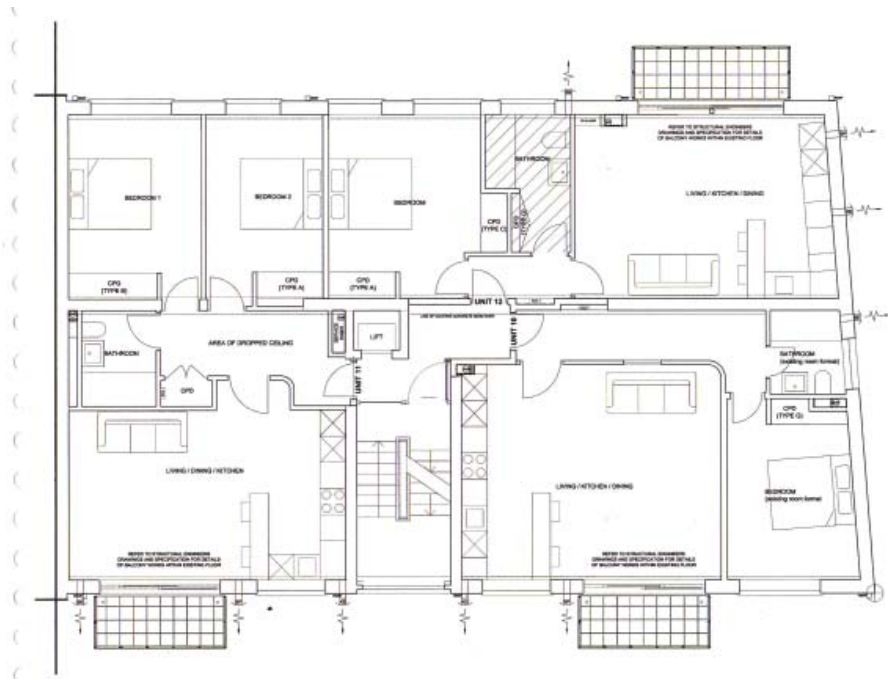
CONTRACT PERIOD: 70 weeks

STAGE: Completed 2012

DESCRIPTION: Prior to development, Embassy Lodge consisted of a rundown 1960's apartment block of 12 units located off Green Lanes, N4.

The works involved a transformation of the 12 flats to new, modern standards and styling as well as the addition of six flats through the conversion of basement space and the addition of a new crowning storey. As well as the new storey, the introduction of features such as balconies accessed through large glazed doors, an entrance lobby and the motif of a wooden handrail, the building reads as new. The opportunity has been taken to upgrade the original building to out-perform the requirements of the building regulations with regards to conversions.





TYPICAL FLOOR PLAN (SECOND FLOOR)

