

Lipton Plant Architects

LOROMAH ESTATES ALLEN ROAD

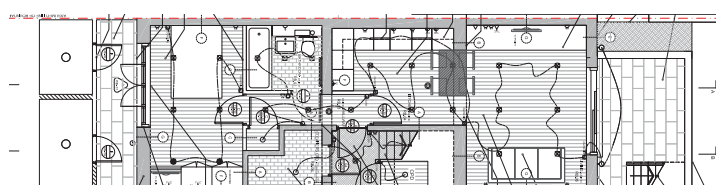
CONTRACT SUM: £538,000

CONTRACT PERIOD: 32 weeks

STAGE: Completed 2013

DESCRIPTION: Allen Road originally consisted of a commercial unit on the ground floor with associated storage on the lower ground floor and a two bed residential unit covering the first and second floors. The development aimed to refurbish the current property creating residential units across all four floors, building a full width extension to the rear creating two, one bedroom apartments at ground and lower ground levels without impacting on the neighbouring properties. At the front of the extension the new units were benefited from a re-instated light-well opening onto a sunken terrace. At the rear, glazed doors lead from the living rooms into the garden.

The development also involved re-modelling an existing garage to the rear of the property to provide a one bedroom living unit over two floors, facing onto Milton Grove and the parkland behind the property.



LOWER GROUND FLOOR PLAN OF DEVELOPMENT